

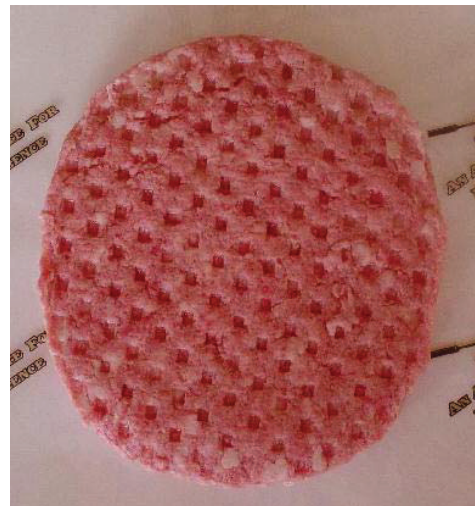


2302 1<sup>st</sup> St., PO Box 69  
 Coal Valley, IL 61240  
 309-799-7341

## 80/20 GROUND BEEF PATTIES

### Product Description

Our patties are made with 100% pure beef in an 80/20 blend, for a great taste without all the fat. Available in a wide variety of sizes and quick-frozen for freshness, these patties will satisfy every appetite! IQF



### Specifications

Item #	Size	Case Weight
11382	8 oz.	10#
11383	5.33 oz.	10#
11383W	5.33 oz. Wide	8#
11384	4 oz.	10#
11384P	4 oz. papered	10#
11384TNP	4 oz. Thin	10#
11384W	4 oz. Whopper	10#
11385	3.2 oz.	10#
11385P	3.2 oz. papered	10#
11386	2.67 oz.	10#
11388P	2 oz. papered	10#

Offer your customers  
 'specialty burgers'  
 with a la carte  
 toppings such as chili,  
 bacon, jalapenos, sour  
 cream or gourmet  
 cheeses!

TIP:



### Nutritional Information (Per 1 oz. Serving)

Protein	5.3 grams
Fat	6.0 grams
Carbohydrates	0.1 grams
Sodium	22 mg.
Calories	76