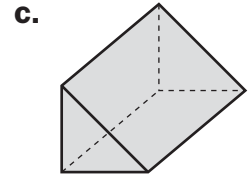
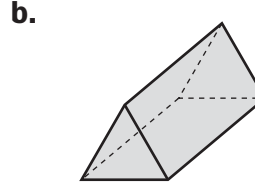
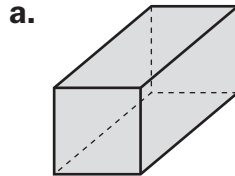
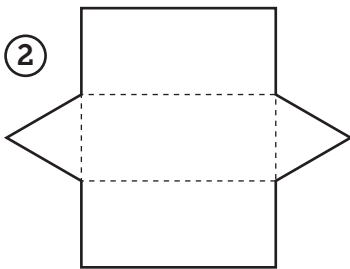
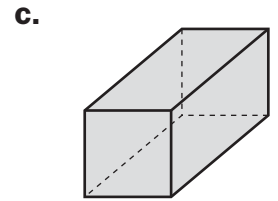
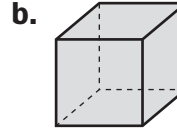
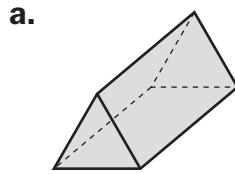
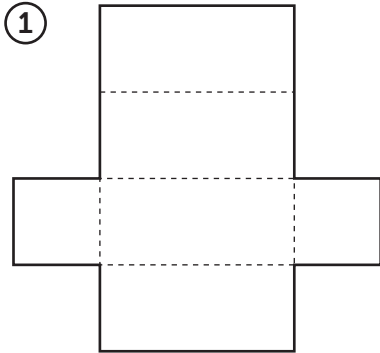


Real-World Nets



Circle the solid that can be made from each net.



③ Use the net and its corresponding geometric solid in Problem 2.

a. Which polygons make up the faces of your solid?

How many are there of each kind? _____

b. Which faces are parallel? _____

c. Which faces are congruent? _____

d. How many edges are there? How many vertices? _____

Practice Multiply.

④ $5.2 * 3 =$ _____

⑤ $1.04 * 2 =$ _____

⑥ _____ $= 0.14 * 3$