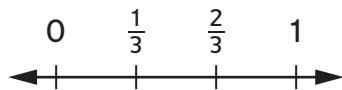


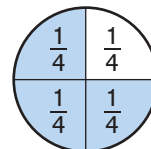
- 1 Use the number line to help you add the fractions.



$$\frac{1}{3} + \frac{1}{3} = \frac{2}{3}$$

 SRB  
160-161

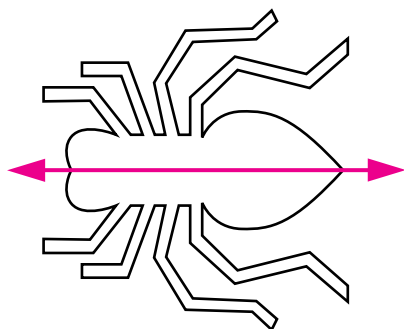
- 2 Use the fraction circle to help you find the missing addend.



$$\frac{3}{4} = \frac{1}{4} + \frac{1}{4} + \frac{1}{4}$$

 SRB  
160-161

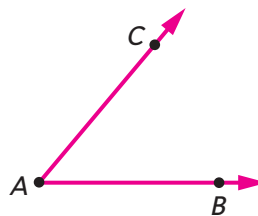
- 3 Use a straightedge to draw the line of symmetry.


 SRB  
238

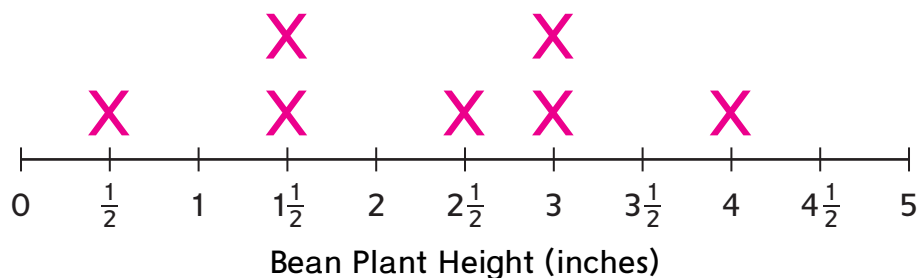
- 4 Draw  $\angle BAC$ . What is another name for  $\angle BAC$ ?  $\angle CAB$

What is the vertex of  $\angle BAC$ ?

Point  $A$


 SRB  
228

- 5 Mrs. Hartman's students grew bean plants for science and measured the height of each plant. Here are their measurements in inches: 3, 4,  $\frac{1}{2}$ ,  $1\frac{1}{2}$ ,  $1\frac{1}{2}$ , 3,  $2\frac{1}{2}$ . Record each measurement on the line plot below.


 SRB  
214

① 4.NF.3, 4.NF.3a ② 4.NF.3, 4.NF.3b ③ 4.G.3

④ 4.G.1 ⑤ 4.MD.4