

1 Fill in the blank with $>$, $<$, or $=$.

a. $\frac{3}{6}$ _____ $\frac{1}{2}$

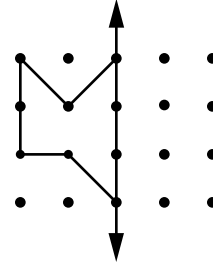
b. $\frac{4}{5}$ _____ $\frac{5}{8}$

c. $\frac{3}{8}$ _____ $\frac{2}{4}$

d. $\frac{4}{10}$ _____ $\frac{30}{100}$



2 Use a straightedge. Draw the other half of the symmetric shape.



3 Fill in the chart.

Milliliters (mL)	Liters (L)
1,000	1
	2
	5
	6.5
	8.75



4 Justin has 150 baseball cards in his collection. It is three times as large as Stuart's collection. How many cards does Stuart have?

Number model with unknown:

Answer: _____ cards



5 Ms. Sullivan's class measured to the nearest half-inch how much their plants had grown 1 week after planting the seedlings.

Inches grown: $\frac{1}{2}$, 1, $1\frac{1}{2}$, 2, $2\frac{1}{2}$, 3, $3\frac{1}{2}$, $\frac{1}{2}$, 1, $1\frac{1}{2}$, 2, $2\frac{1}{2}$, $3\frac{1}{2}$, $\frac{1}{2}$, 1, $2\frac{1}{2}$, $3\frac{1}{2}$, $2\frac{1}{2}$

a. Plot the data on the line plot below, and use it to answer the questions.

b. How many plants grew to be 2 or $2\frac{1}{2}$ inches tall? _____ plants

c. What is the difference in height between the tallest plant and shortest plant?

Number model with unknown:

Answer: _____ inches

