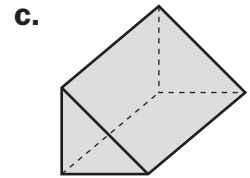
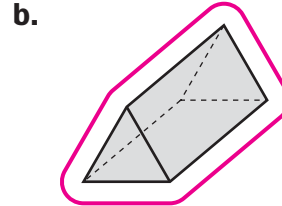
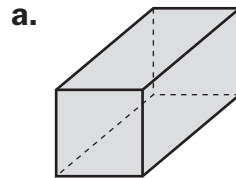
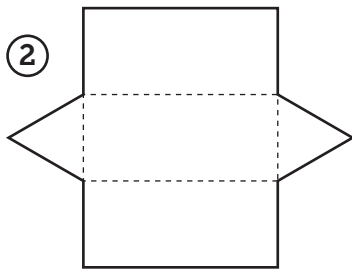
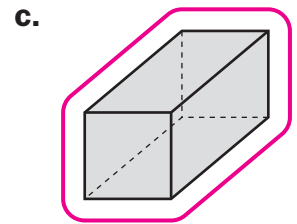
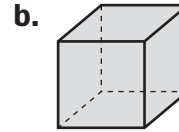
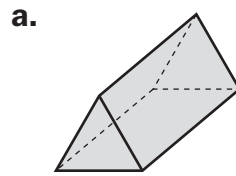
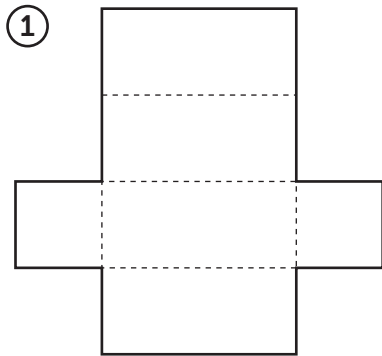


Real-World Nets

 SRB
263-264

Circle the solid that can be made from each net.



③ Use the net and its corresponding geometric solid in Problem 2.

a. Which polygons make up the faces of your solid?

How many are there of each kind? 2 triangles and 3 rectangles

b. Which faces are parallel? The triangular faces

c. Which faces are congruent? 2 triangular and 3 rectangular faces

d. How many edges are there? How many vertices? 9 edges and 6 vertices

Practice Multiply.

④ $5.2 * 3 = \underline{15.6}$

⑤ $1.04 * 2 = \underline{2.08}$

⑥ $\underline{0.42} = 0.14 * 3$