

# Syncing Your Bluetooth Mouse to your Surface Pro

Follow the steps below to sync your Bluetooth mouse to your Surface Pro.

1. Remove the mouse from the packaging being sure to **remove the batteries**.



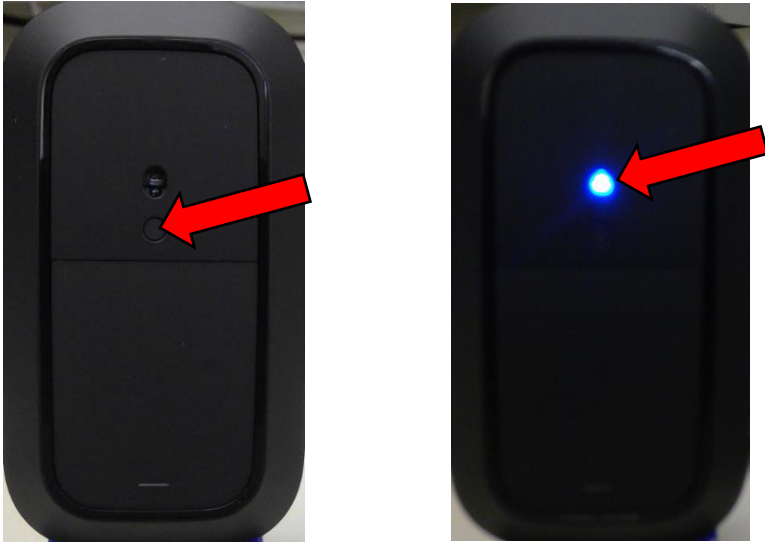
2. Open the battery cover on the mouse by **depressing** the bottom-middle where there is a **small horizontal tab**.



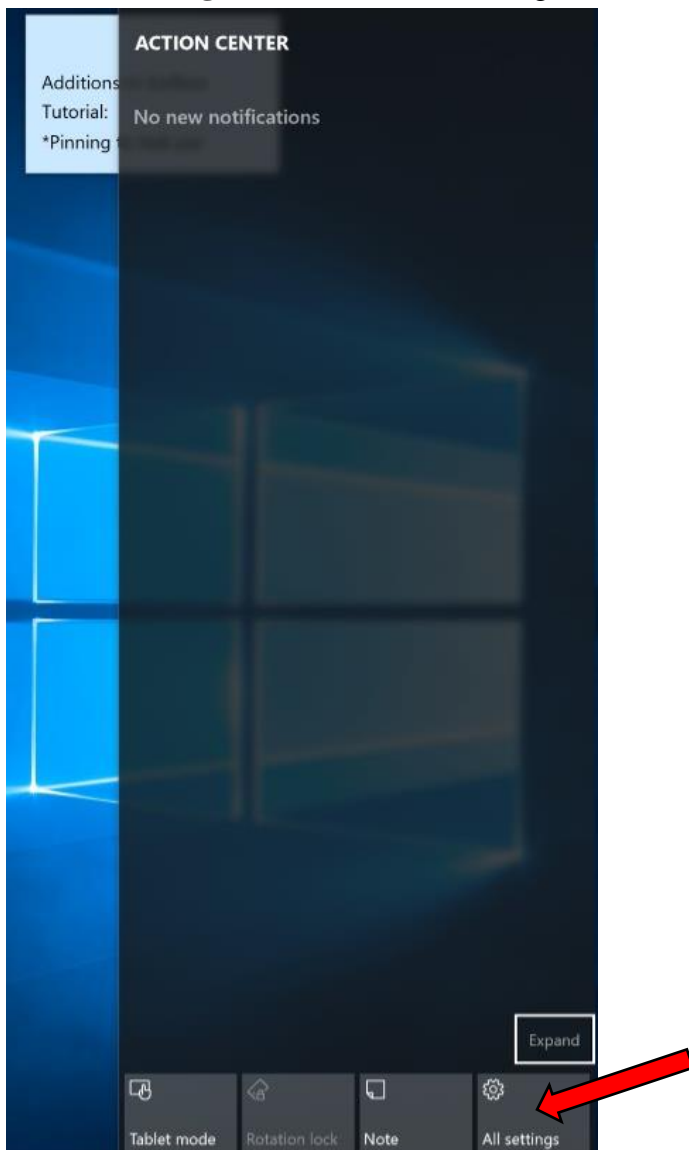
3. Insert the two **AA batteries** and **replace** the battery cover.



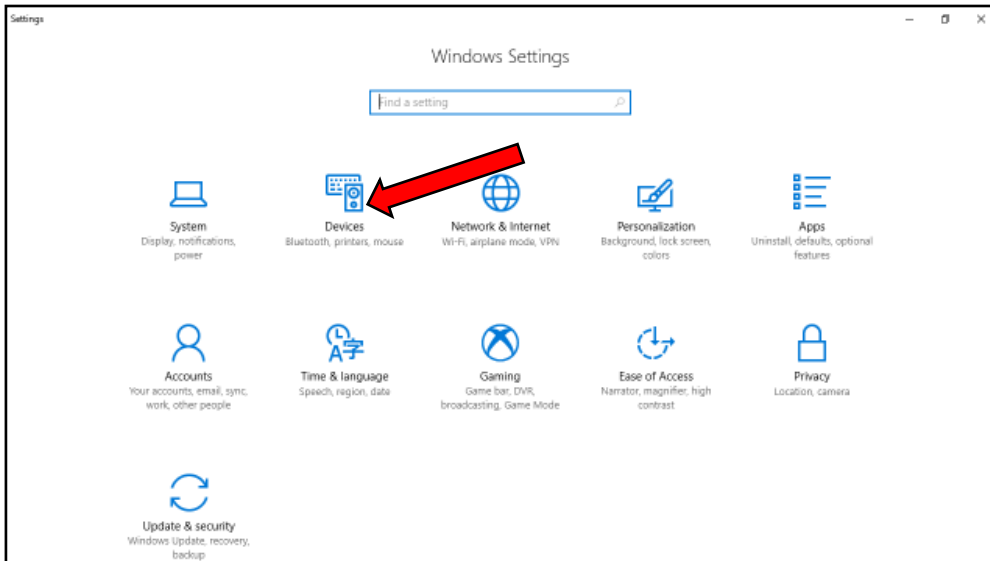
4. To pair your mouse with your Surface, **press and hold the Bluetooth button for 3 seconds** on the underside of the mouse. The **blinking light** indicates pairing mode.



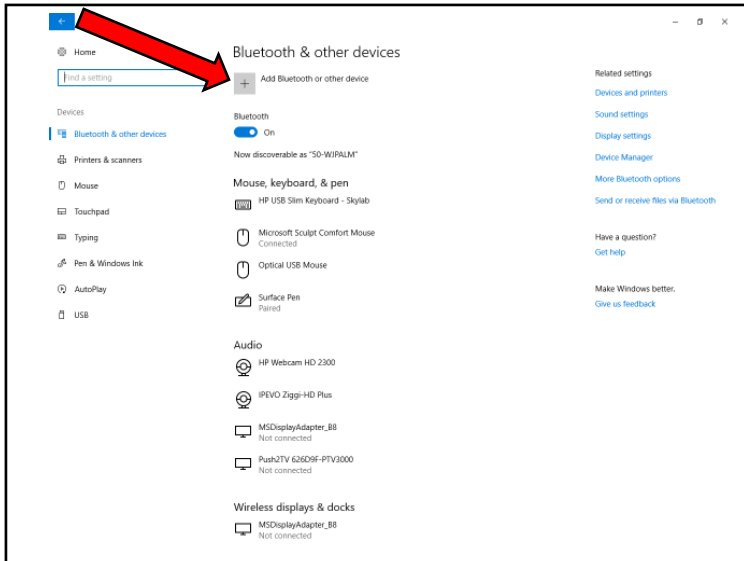
5. Swipe the Surface screen from the **right edge to the left** to open the **Action Center window**. Then click on the **All Settings button** at the bottom-right of the window.



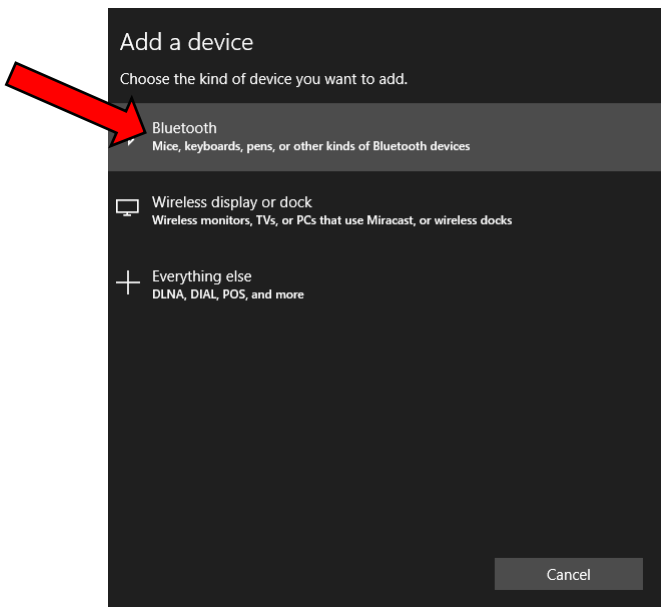
6. Click on **Devices**.



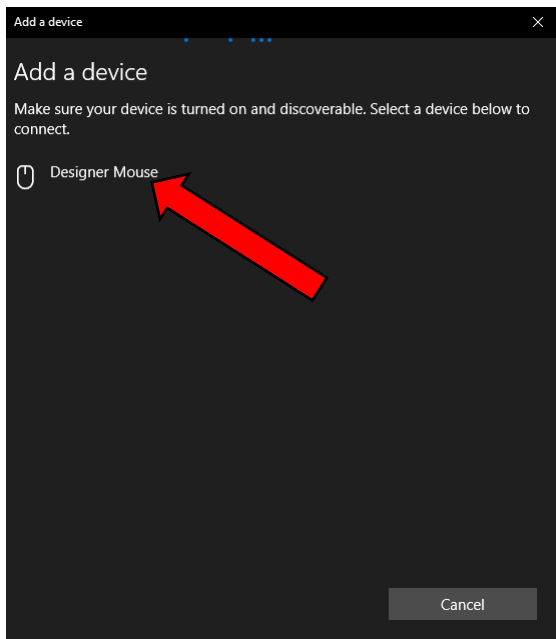
7. Click on **Add Bluetooth or Other Device**.



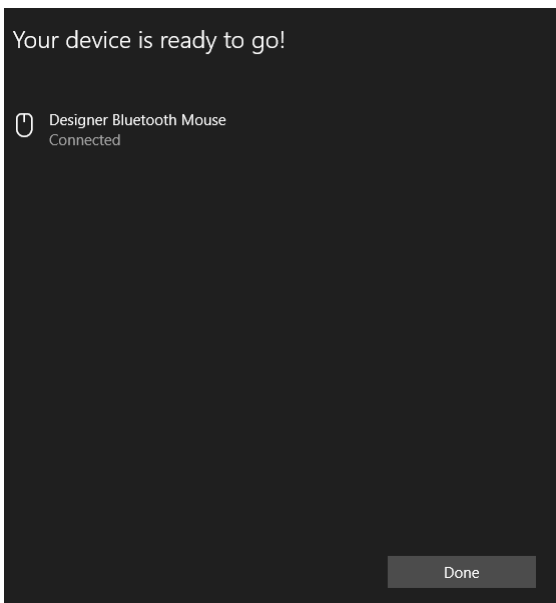
8. Click on **Bluetooth**.



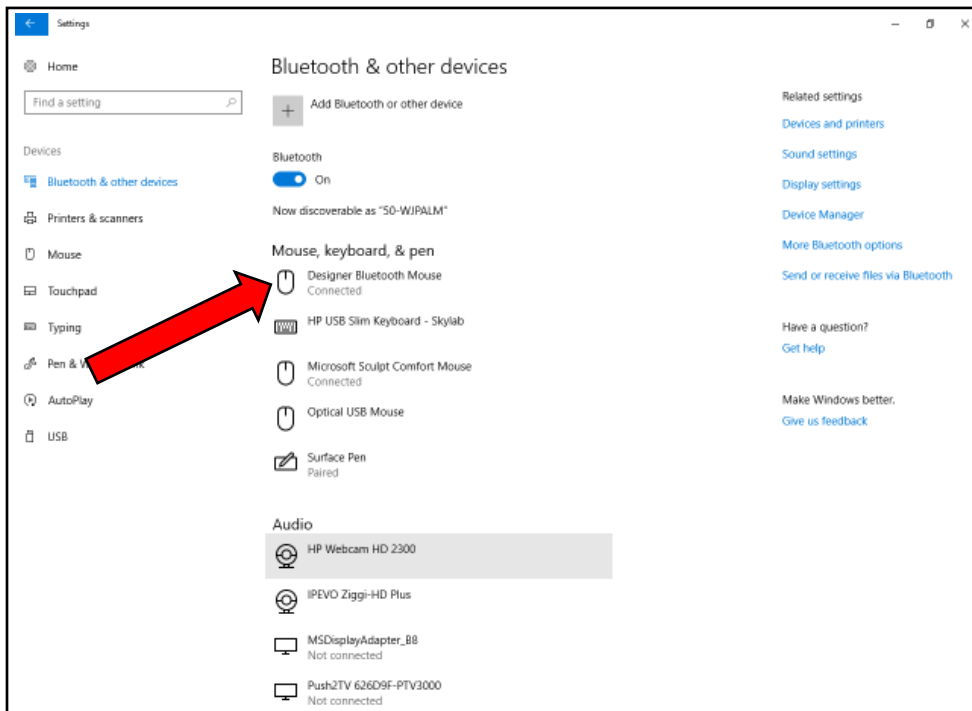
9. Click on **Designer Mouse**.



10. After a few seconds, you should receive this message.



11. Now you should notice that the Designer Mouse is listed on Mouse, Keyboard and Pen list and describes it as connected.



**You are all done!**